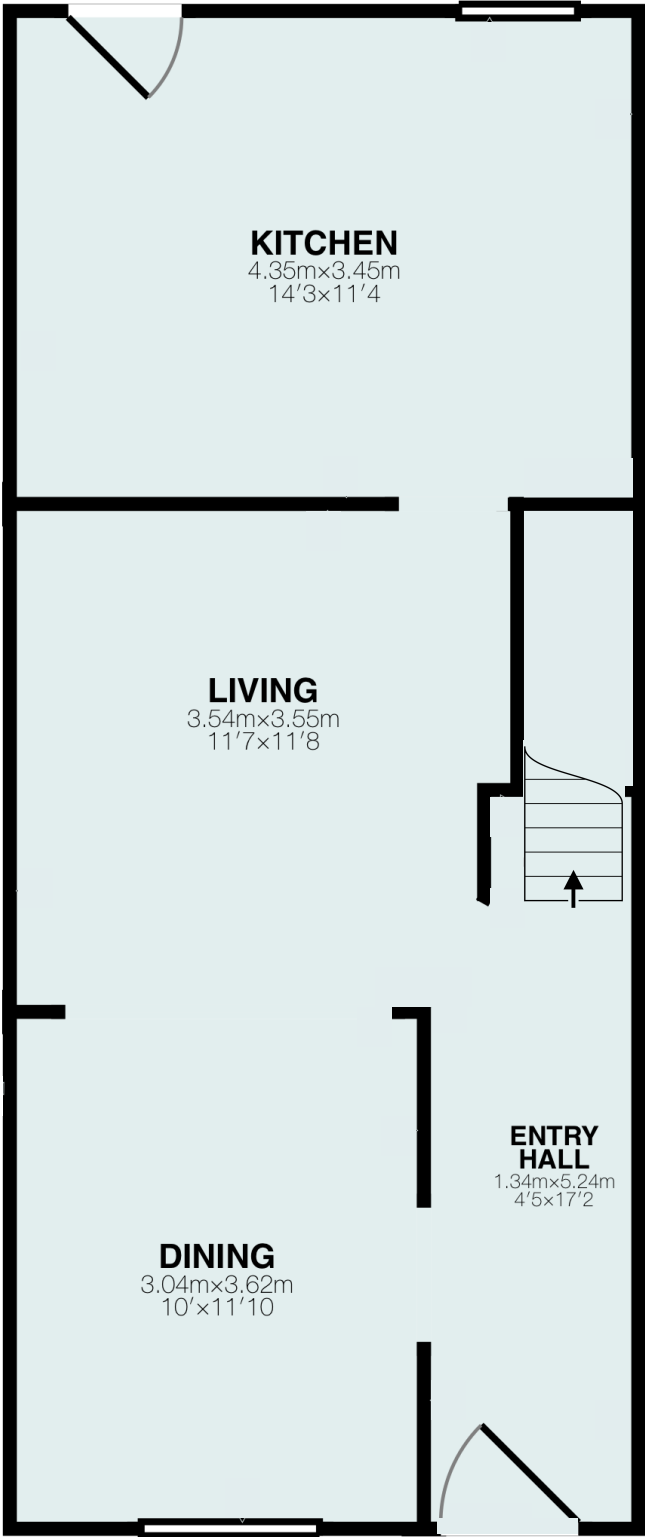




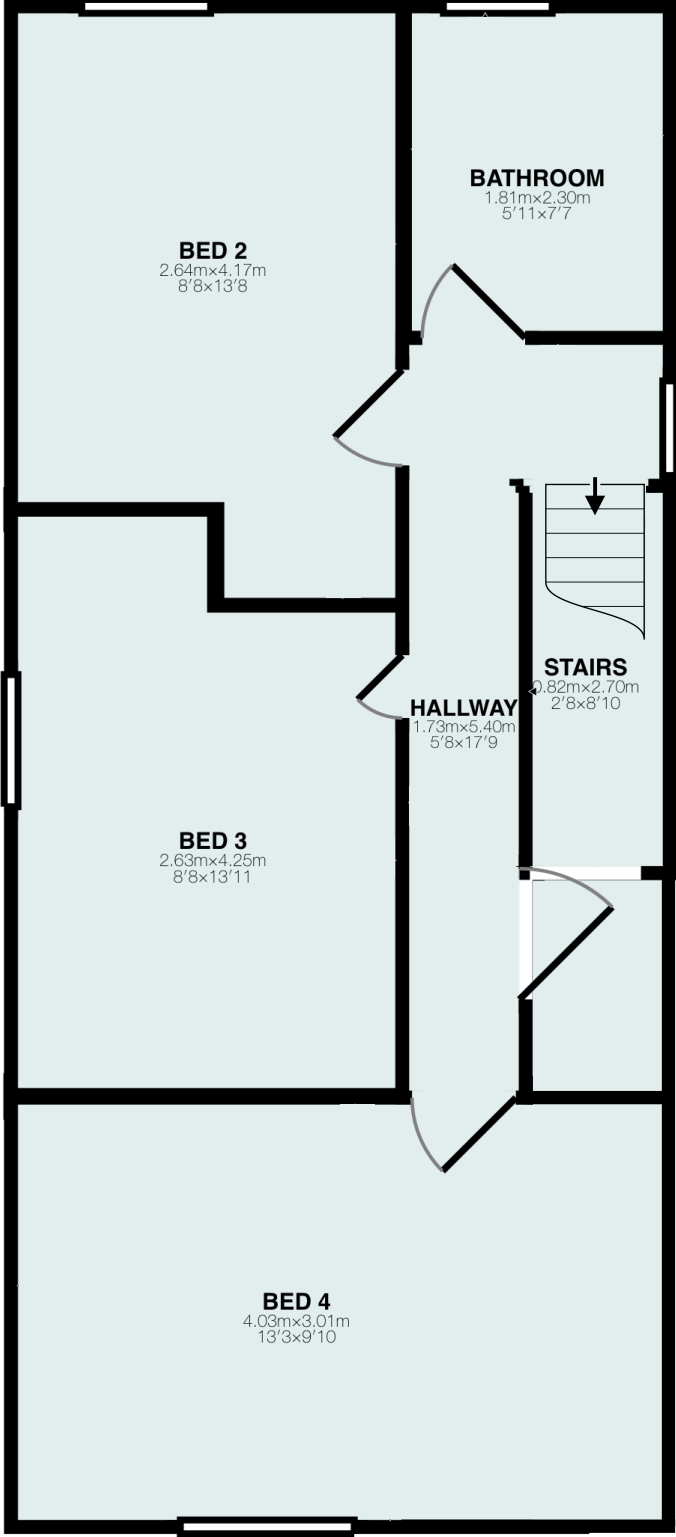
**Main Level
(above grade)**

Approx Interior Floor Area = 479.0 ft²
Approx Exterior Area = 568.38 ft²



**Upper Level
(above grade)**

Approx Interior Floor Area = 469.8 ft²
Approx Exterior Area = 559.33 ft²



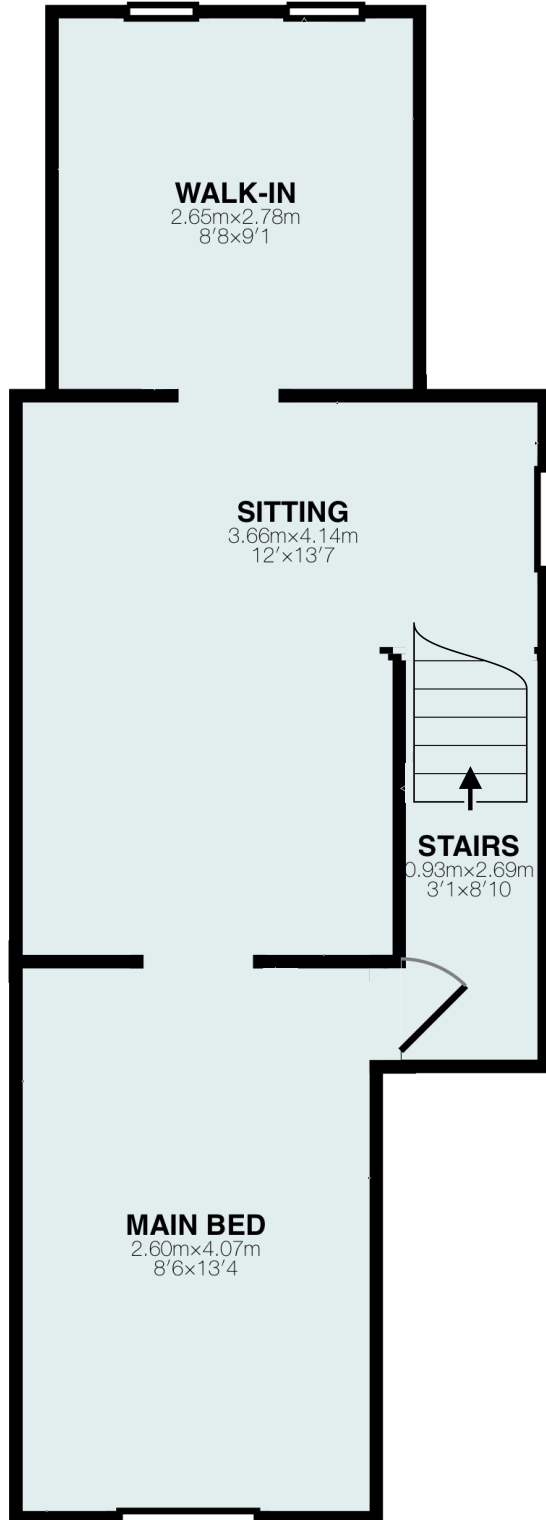


Attic

(above grade)

Approx Interior Floor Area = 361.8 ft²

Approx Exterior Area = 450.56 ft²

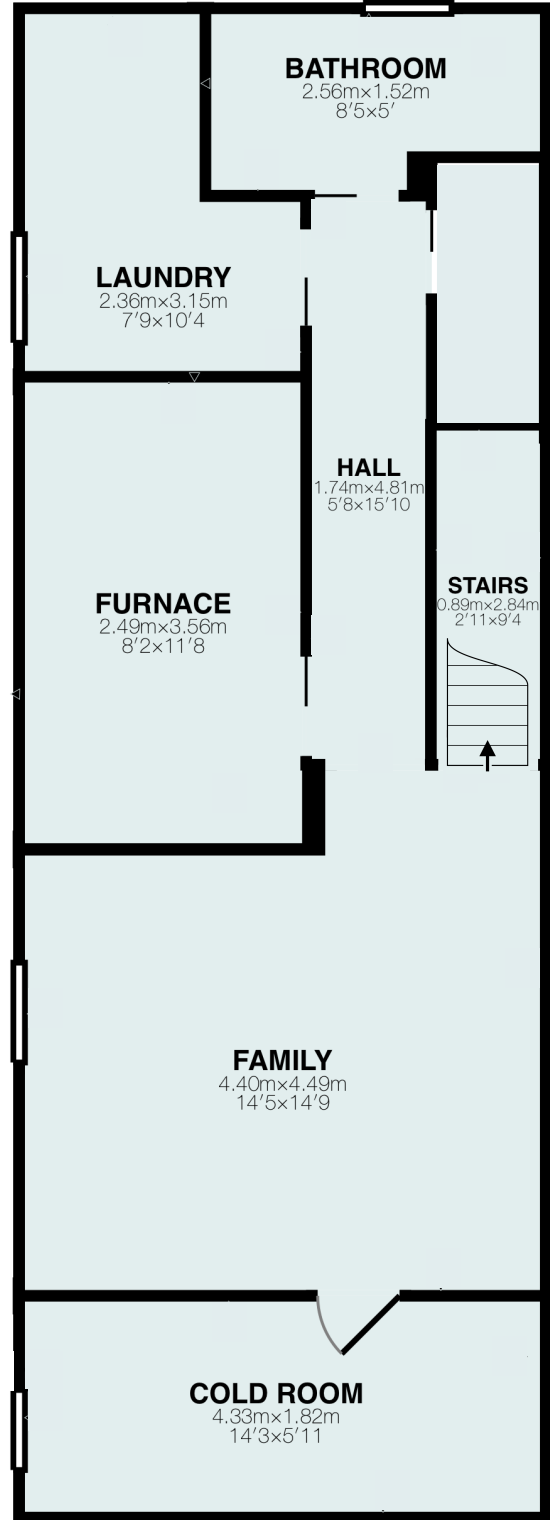


Lower Level

(below grade)

Approx Interior Floor Area = 565.0 ft²

Approx Exterior Area = 677.51 ft²



Main Room Measurements

Main Floor

	Imperial	Metric	Interior ft ²
Living Room	11'7 x 11'8	3.54m x 3.55m	133.7 ft ²
Dining Room	10' x 11'10	3.04m x 3.62m	111.6 ft ²
Kitchen	14'3 x 11'4	4.35m x 3.45m	163.4 ft ²
Entry Hall	4'5 x 17'2	1.34m x 5.24m	70.3 ft ²

Second Floor

Bedroom 2	8'8 x 13'8	2.64m x 4.17m	107.8 ft ²
Bedroom 3	8'8 x 13'11	2.63m x 4.25m	107.2 ft ²
Bedroom 4	13'3 x 9'10	4.03m x 3.01m	130.5 ft ²
Bathroom	5'11 x 7'7	1.81m x 2.30m	44.7 ft ²

Attic

Main Bedroom	8'6 x 13'4	2.60m x 4.07m	113.8 ft ²
Sitting Room	12' x 13'7	3.66m x 4.14m	136.0 ft ²
Walk-in	8'8 x 9'1	2.65m x 2.78m	79.3 ft ²

Lower Level (below grade)

Family Room	14'5 x 14'9	4.40m x 4.49m	192.3 ft ²
Cold Room	14'3 x 5'11	4.33m x 1.82m	84.7 ft ²
Furnace	8'2 x 11'8	2.49m x 3'56m	102.4 ft ²
Laundry	7'9 x 10'4	2.36m x 3.15m	64.9 ft ²
Bathroom	8'5 x 5'	2.56m x 1.52m	42.6 ft ²

Totals

Total Exterior ft ² (above grade)	1578.27 ft ²
Total Exterior ft ² (all levels)	2255.78 ft ²

Rooms have irregular shapes and, as such, cannot be truly represented by one length and width. The length and width listed above are the longest length and width of the room. Because of this, room area is not always equal to the product of length and width but has been calculated in any floor area accurately using all wall measurements.

